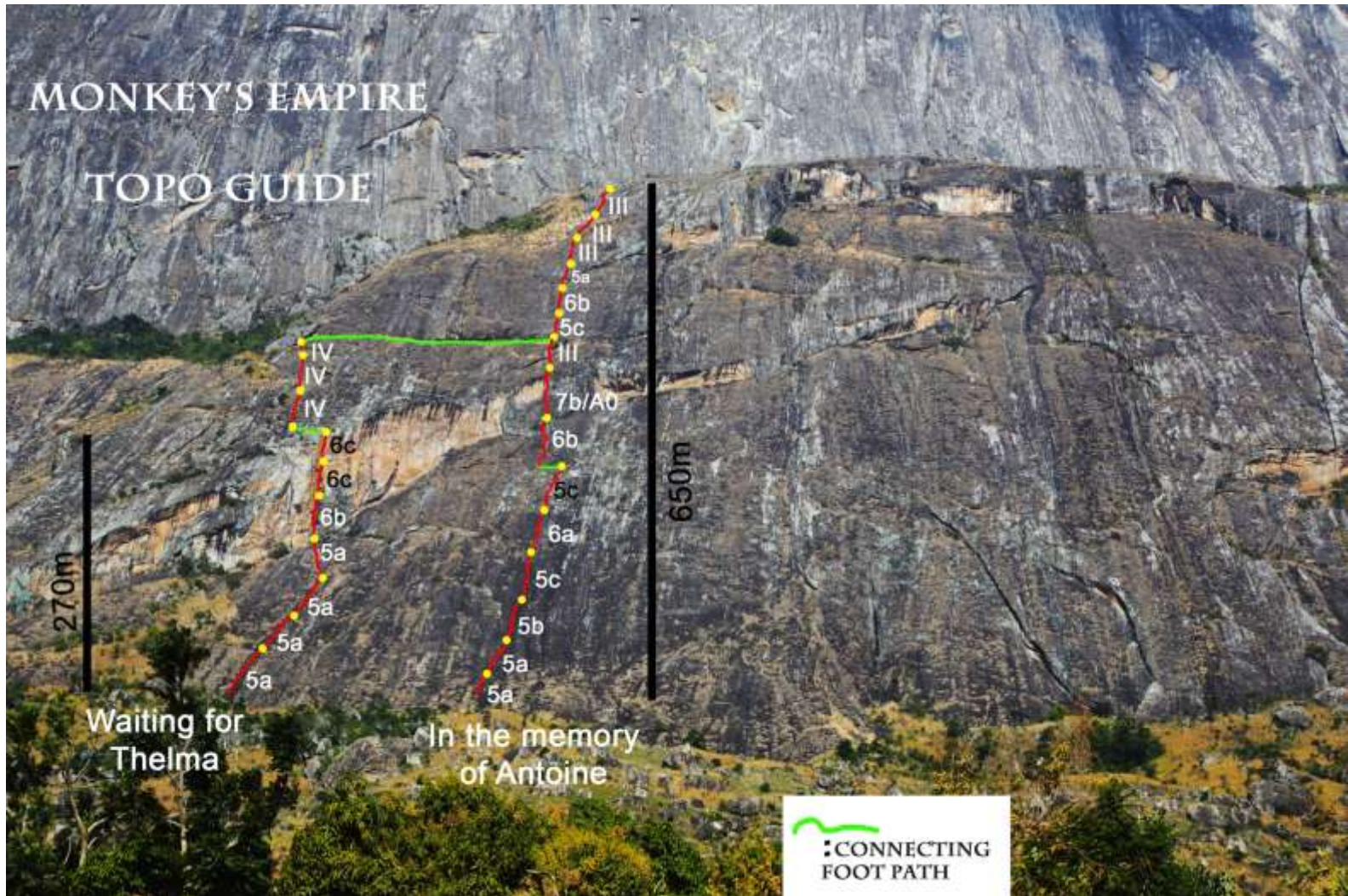


GUIDE TO CLIMB CHAMBE WEST FACE

EQUIPED ROUTES SINCE JUNE 2014



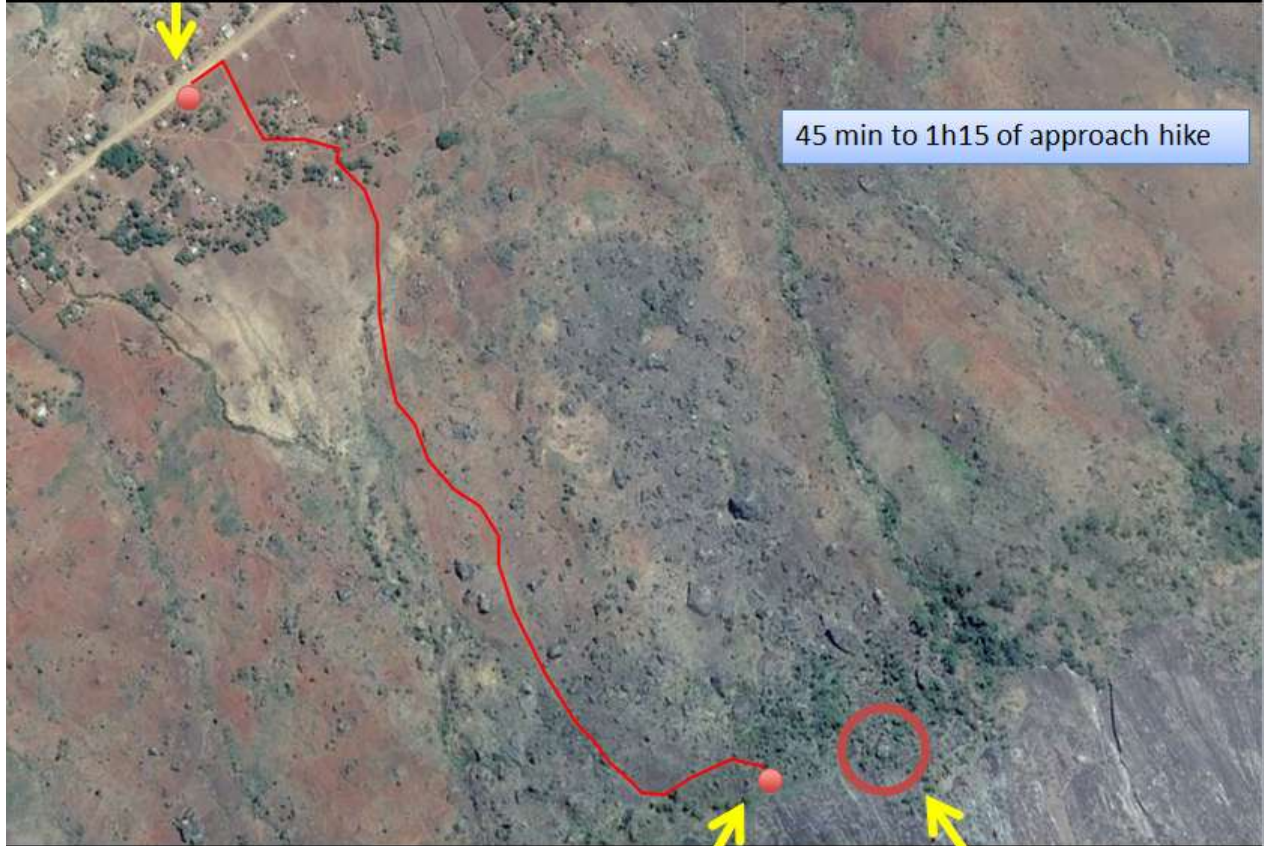
Access:

- 17 km from Chitakale (Close to Mulanje), starting from the junction (tarmac and dirtroad in direction of Phalombe)
- 17 km from Phalombe, starting from the junction of the trading center.
- Park your car at Vicky's shop, with the coordinates given in the following page
- Then, walk in direction of the cliff for 1 hour approximately. (Try before to identify the route from the bottom to know where you go).
- Start the route with the GPS coordinates given in the following page

Contact number:

- Vincent Barbier Program manager at Inter Aide, based in Phalombe: 0884 15 16 99
 - Evance, mountain guide based in Tuchila: 0882 75 54 36
 - Gift, mountain guide based in Tuchila: 0881 70 74 35
- They can assist you to carry some material, food and waters in case if you plan to stay more than a day.

Starting point from « Vicky's shop »: 35° 30'36.38 E 15° 52'23.95 S



Starting route from: 35° 31'08.60 E 15° 52'59.28 S

Campsite boulder

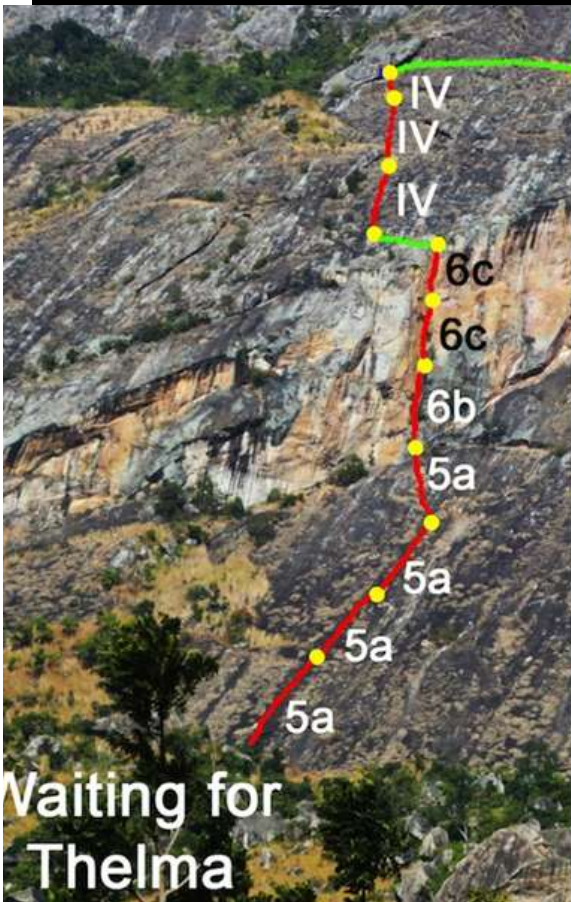
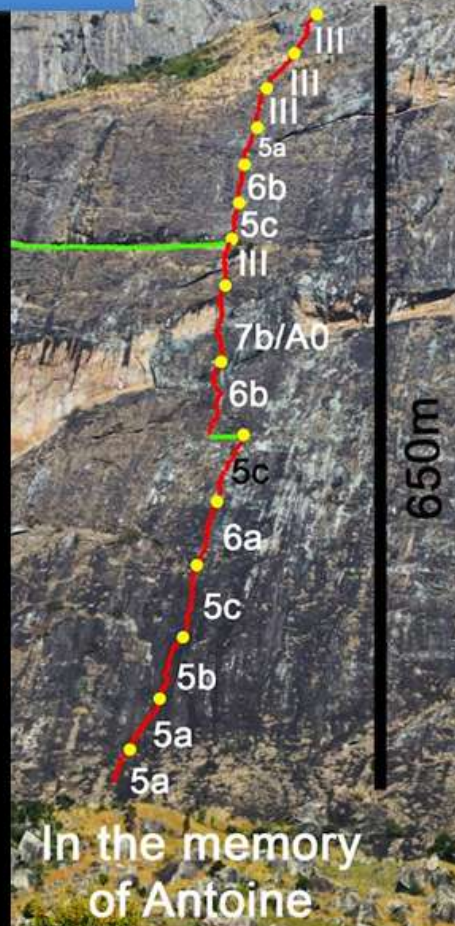
Starting point from « Vicky's shop »: 35° 30'36.38 E 15° 52'23.95 S



Starting route from: 35° 31'08.60 E 15° 52'59.28 S

Route 1: In the memory of Antoine

- 15 pitches
- Approximately 650 m
- Possibility to sleep on a comfortable terrace after the sixth pitch
- 11 hours needed as a couple (more if you are three)
- The eight pitch is tough but was equipped for artificial climbing with the possibility to use ladder, and spits are closer to each other.



Route 2: Waiting for Thelma

- 10 pitches
- Approximately 270 m
- More a sport route with a nice climb in a natural crack
- 4 to 5 hours needed
- No artificial pitches
- Harder climbing level with 2 piches in 6c